



PRECISION RAILWAY COMPANY



***FACTORY AUTHORIZED REMANUFACTURER
HARSCO 6700 Switch / Production Tamper***



PRECISION RAILWAY COMPANY

FACTORY AUTHORIZED RE-MANUFACTURER OF HARSCO MODEL 6700 SWITCH PRODUCTION TAMPER

Remanufacturing

The Harsco 6700 switch production tamper includes four workhead carriages with hydraulic vibrator motors that deliver 4500 VPM in tamping power. The Harsco 6700 is ideal for moderate track raises and is capable of making lifts up to 4 inches at approx. 20 ties per minute.



Remanufacturing Process

We remanufacture Harsco 6700 Switch Production Tampers, upfitting them with the latest OEM technology available. We have the ability to remanufacture customers' existing equipment or procure equipment on their behalf for remanufacturing.

- Jupiter II Operating System
- All major components purchased from OEM, Harsco Rail
- Remanufactured machines have same warranty, reliability, productivity and technology as a new machine

Details of the remanufacturing process of a Harsco 6700 small cab to large cab conversion.



Small cab frame



Frame extension that will convert small cab to large cab style 6700



Rear platform removed and ready for frame extension to be installed



Frame extension in place



Frame extension married to original small cab frame



Frame extension and rear platform newly painted



Front view of newly painted frame and platform



New cab built and painted, ready for install



New OEM components to go on existing frame



Engine remanufactured Cummins 8.3 liter diesel engine, covered by 2-year Cummins warranty



Painted frame in assembly bay



Remanufactured front axle, new front stabilizer cylinders and remanufactured rear drive



New hoses and accumulators



Remanufactured engine being installed



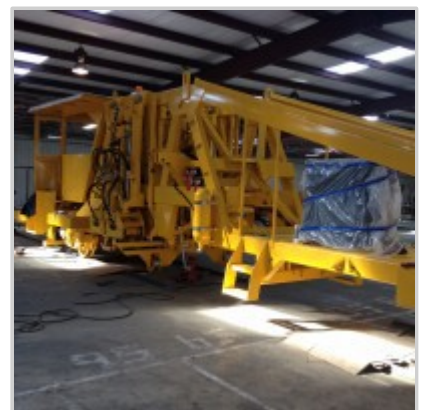
New cab, freshly painted and installed



Remanufactured Harsco workheads being installed



All four workheads installed



New oil cooler relocated to front deck



**Remanufactured Harsco jackbeam
ready to be installed**



**All major components installed.
Machine ready to be filled with
hydraulic fluid and tested**

