



Shuttlewagon Rail Car Movers

A Nordco Company



Commander Series Rail Car Movers



Navigator Series Rail Car Movers

COMMANDER SERIES



The Commander series Shuttlewagon® defines railcar switching operations for today's needs. Powerful, versatile, and dependable, it incorporates the most advanced technologies available to ensure that safety and reliability are never compromised.

BY  **SHUTTLEWAGON**
MOBILE RAILCAR MOVERS

180° rotating console with color multifunction display. Dual four way air suspension operator seats for either side on-rail operator control.



Independently actioned railwheels and Pneumatically supported rubber drive tires for greater traction and reduced rail movement shock loading.



Pull out sander boxes with wide mouth lids for easy loading. Air activated sanders for smooth dispensing.



Wide range AAR sliding couplers are air released and hydraulically positioned. Improves pulling performance in curves and grades.



Safely attach glad hand hoses with ease; Shuttlewagon offers industry leading space between railcar and mobile railcar mover.



Large high density cross linked polyethylene (HDXLPE) 90 gallon fuel tank for extended operational capacity.



 **SHUTTLEWAGON, INC.**
4116 Dr. Greaves Road Grandview, MO 64030
(816) 767-0300 www.shuttlewagon.com

A  **Nordco COMPANY**
Service from the Ground Up®

SWX315

Engine: Cummins QSB 6.7 U.S. EPA Tier 3 (electronic) 185 H.P. @ 2300 RPM

Dimensions:

Height: 130.5"/3215 mm
Width: 120"/3048 mm
Length: 242"/6147 mm (end of coupler to end of coupler)
Wheel Base: 92"/2337mm
Weight: 43,000lbs/19,498kg

Rail Gauge: AAR standard 56.5" (1435mm)

Tractive Effort: 27,000lbs single coupled without weight transfer (119,864N)

SWX420

Engine: Cummins QSB 6.7 U.S. EPA Tier 3 (electronic) 185 H.P. @ 2300 RPM

Dimensions:

Height: 131"/3327mm
Width: 120"/3048mm
Length: 242"/6147mm (end of coupler to end of coupler)
Wheel Base: 92"/2337mm
Weight: 46,000lbs/20,863kg

Rail Gauge: AAR standard 56.5" (1435mm)

Tractive Effort: 30,000lbs single coupled without weight transfer (133,200N)

For narrow or wide gauge applications, please consult with factory.

Note: Tractive effort may vary with rail weather conditions.
Dimensions and weight do not include and optional equipment.
Specifications are subject to change without notice.



Standard Features: Included

- Full width Cab; 360 degree visibility
- 180 Degree Rotating Console
- Two Air Ride Operator Seats
- Air Conditioning
- ABS Vehicle Brakes
- Anti-slip Traction Control
- CAN-Bus Electrical System
- 90 Gallon Fuel Tank
- Three 12 Volt Power Receptacles
- Engine Diagnostic Adapter; Console
- Tinted Cab Glass
- Door Mounted Windshield Wipers

Optional Features: Sampling

- Radio Remote Control
- Spare Remote Transmitter
- Switchman Emergency Shutdown
- ShuttleTrak; Machine Telematics
- Hydraulic Broom
- Snow Plow
- Cold Weather Package
- Single Point Lube
- Automatic Lube
- Lockout-Tagout
- Cab Controlled Exterior Spotlight
- Cab Air Pressurizer
- Corrosion Resistance Package
- LED Work Lights
- Air Knife
- Air Bell
- Rear Camera; Console Monitor
- Fire Extinguisher

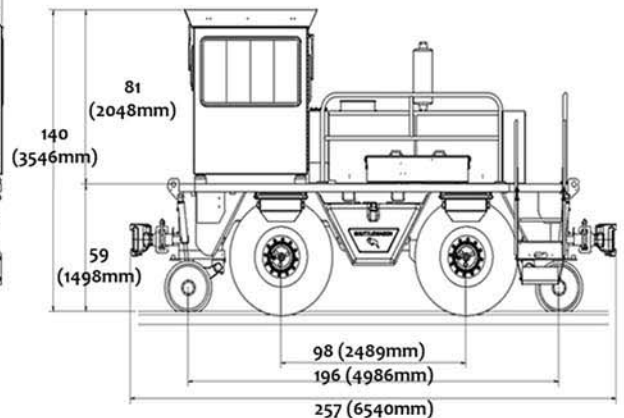
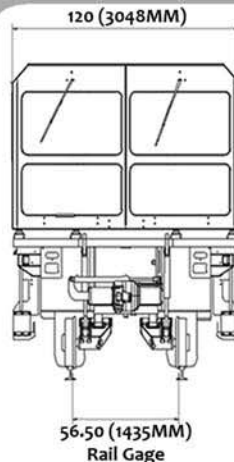
Additional Options available upon request.



4116 Dr. Greaves Road
Grandview, MO 64030

(816) 767-0300

www.shuttlewagon.com



N NAVIGATOR SERIES



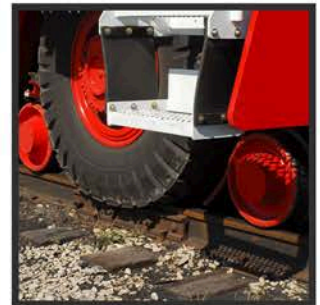
The Navigator series Shuttlewagon® defines railcar switching operations for today's needs. Powerful, versatile, and dependable, it incorporates the most advanced technologies available to ensure that safety and reliability are never compromised.

BY  **SHUTTLEWAGON**
MOBILE RAILCAR MOVERS

180° rotating console with color multifunction display. Dual four way air suspension operator seats for either side on-rail operator control.



Two independent drive wheel trucks supported on rotating bearings with (8) 16" AAR profile guide wheels. ABS & Traction Assist provide more control while reducing maintenance cost.



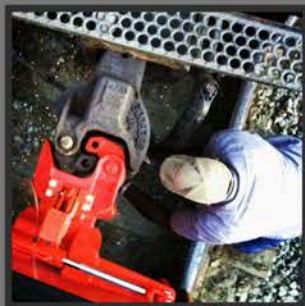
Pull out sander boxes with wide mouth lids for easy loading. Air activated sanders for smooth dispensing.



Wide range AAR sliding couplers are air released and hydraulically positioned. Improves pulling performance in curves and grades.



Safely attach glad hand hoses with ease; Shuttlewagon offers industry leading space between railcar and mobile railcar mover.



Large high density cross linked polyethylene (HDXLPE) 90 gallon fuel tank for extended operational capacity.



 **SHUTTLEWAGON, INC.**
4116 Dr. Greaves Road Grandview, MO 64030
(816) 767-0300 www.shuttlewagon.com

A  **Nordco COMPANY**
Service from the Ground Up®

NVX5025

Engine: Cummins QSB 6.7 U.S. EPA Tier 3 (electronic) 215 H.P. @ 2500 RPM

Dimensions:

Height: 143.5" / 3645mm
Width: 120" / 3048mm
Length: 296" / 7518mm (end of coupler to end of coupler)
Wheel Base: 168" / 4267mm
Weight: 61,000lbs / 27,487kg

Rail Gauge: AAR standard 56.5" (1435mm)

Tractive Effort: 38,000lbs single coupled without weight transfer (169,032N)

NVX6030

Engine: Cummins QSC 8.3 U.S. EPA Tier 3 (electronic) 275 H.P. @ 2200 RPM

Dimensions:

Height: 143.5" / 3645mm
Width: 120" / 3048mm
Length: 296" / 7518mm (end of coupler to end of coupler)
Wheel Base: 168" / 4267mm
Weight: 67,000lbs / 30,390kg

Rail Gauge: AAR standard 56.5" (1435mm)

Tractive Effort: 45,000lbs single coupled without weight transfer (191,274N)

NVX7035

Engine: Cummins QSC 8.3 U.S. EPA Tier 3 (electronic) 300 H.P. @ 2200 RPM

Dimensions:

Height: 143.5" / 3645mm
Width: 120" / 3048mm
Length: 296" / 7518mm (end of coupler to end of coupler)
Wheel Base: 168" / 4267mm
Weight: 73,000lbs / 33,112kg

Rail Gauge: AAR standard 56.5" (1435mm)

Tractive Effort: 50,000lbs/single coupled without weight transfer (222,411N)

For narrow or wide gauge applications, please consult with factory.

Note: Tractive effort may vary with rail and weather conditions.
Dimensions and weight do not include optional equipment.
Specifications are subject to change without notice.

N NAVIGATOR

NVX8040

Engine: Cummins QSC 8.3 U.S. EPA Tier 3 (electronic) 300 H.P. @ 2200 RPM
Cummins QSB 6.7 U.S. EPA Tier 4 (electronic) 300 H.P. @ 2300 RPM

Dimensions:

Height: 143.5" / 3645mm
Width: 120" / 3048mm
Length: 368" / 7518mm (end of coupler to end of coupler)
Wheel Base: 192" / 4267mm
Weight: 101,000lbs / 46,039kg

Rail Gauge: AAR standard 56.5" (1435mm)

Tractive Effort: 60,000lbs single coupled without weight transfer (266,893N)

Standard Features: Included

- Full width Cab; 360 degree visibility
- 180 Degree Rotating Console
- Two Air Ride Operator Seats
- Pivoting Axle and Railgear Assy.
- Air Conditioning
- ABS Vehicle Brakes
- Anti-slip Traction Control
- Can-bus Electrical System
- 90 Gallon Fuel Tank
- Three 12 Volt Power Receptacles
- Engine Diagnostic Adapter; Console
- Tinted Cab Glass
- Door Mounted Windshield Wipers

Optional Features: Sampling

- Radio Remote Control
- Spare Remote Transmitter
- Switchman Emergency Shutdown
- ShuttleTrak; Machine Telematics
- Hydraulic Broom
- Snow Plow
- Cold Weather Package
- Single Point Lube
- Automatic Lube
- Lockout-Tagout
- Cab Controlled Exterior Spotlight
- Cab Air Pressurizer
- Corrosion Resistance Package
- LED Work Lights
- Air Knife
- Air Bell
- Rear Camera; Console Monitor
- Fire Extinguisher

Additional Options available upon request.



4116 Dr. Greaves Road
Grandview, MO 64030

(816) 767-0300

www.shuttlewagon.com

