



ISO Cryogenic Liquid Tank

- **SIZE:** 20 ft.; 40 ft.; 45 ft.; 53 ft.
- **CAPACITY:** 16.6m³ - 61.6m³ (4,400 gallons to 16,324 gallons)
- **WORKING PRESSURE:** 0.7 MPa - 2.2 MPa (101 PSIG to 319 PSIG)
- **INSULATION:** High-vacuum multi-layer insulation
- **MEDIUM:** LNG, LOX, LIN, LAR, LCO₂, LNG
- **COMPLIANCE:** Designed in accordance with ASME or EN/ PED per IMDG code and with CCS certification. Compliance is not limited to ISO9001, ISO14001, OSHAS18001, DOT, TPED, AS1210, EN12079, ADR/RID, CSC, GOST, KS, JS, JB/74784, ISO1496-3, ISO6346-1995, ISO42T7, IMDG 75, IMDGC, IMO, Container Type: 1AA, Stacking allowance: 3, EN12213, EN13530. *Contact us for specific compliance requirements.*



kcenergi.com | Small-Capacity LNG Solutions

Official representative of  **FURUISE**

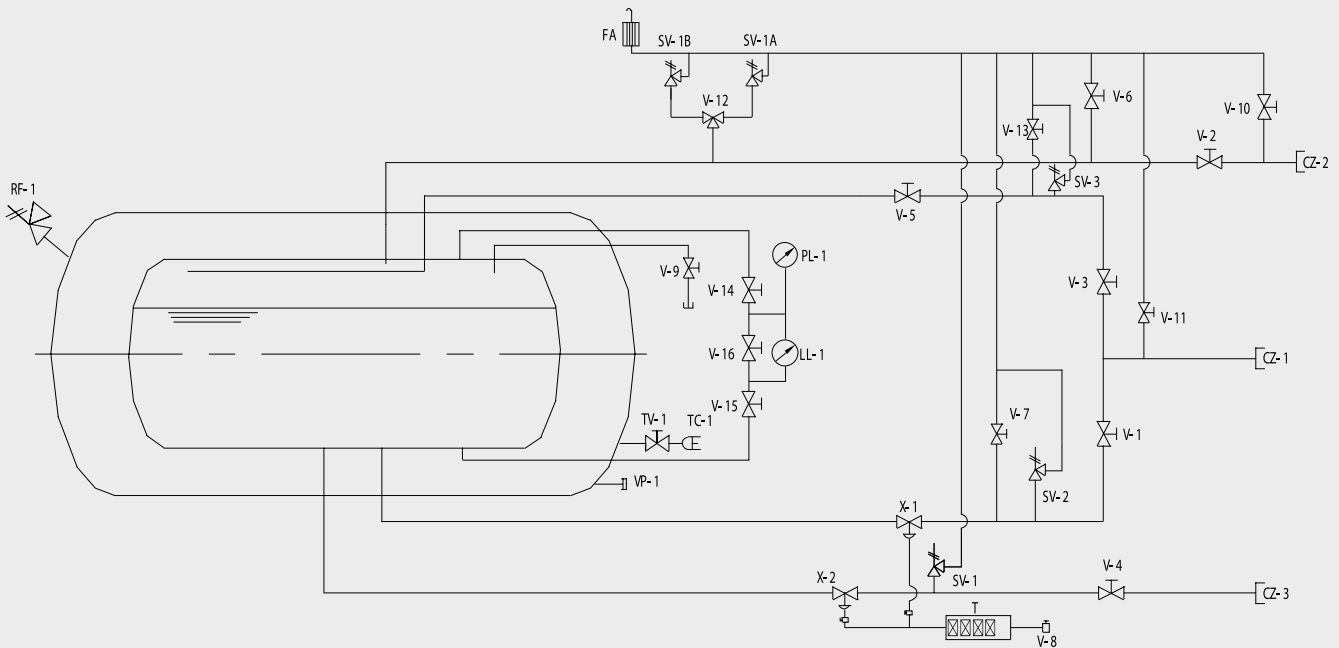
KCenergi, LLC is the USA based application and sales partner of FuruiCIT (Furui Cryogenic Integrated Technologies). We serve global cryogenic markets while providing special emphasis to the Americas, Caribbean and Sub-Saharan Africa. FuruiCIT is a subsidiary of FURUISE Group, a publicly traded world-class manufacturing company with over 30+ years of experience in cryogenic, marine and infrastructure products and systems. FURUISE employs over 3,500 workers with wholly owned operations in the USA, Europe and Asia.

800.362.6085 (OFFICE) | 918.671.2008 (MOBILE) | gea@kcenergi.com

IMDG Code is accepted as the international guideline for the safe transportation of dangerous goods or hazardous materials by marine vessel.

CRYOGENIC LIQUID TANK DATA

Category	Medium	Volume m ³	Working Pressure (MPa)	Dimensions L x W x H (mm)	Gross Weight Max. (kg)	Tare Weight (kg)	Flow Process	Container Application
IMDG:T75	LIN, LOX	16.95	1.6	6,058 x 2,438 x 2,591	30,480	9,800	Standard configuration for liquid N ₂ and O ₂ flow process	Road, rail, marine multi-modal transport
IMDG:T75	LOX, LIN, LAr	18.05	1.8			10,633	Standard O ₂ , N ₂ and Argon flow process	
IMDG:T75	LOX, LIN, LCO ₂ , LAr	18.05	2.2			11,000	Standard O ₂ , N ₂ and SO ₂ flow process	
IMDG:T75	LIN, LOX, LAr	20	1.6			10,750	Standard O ₂ , N ₂ and argon flow process	
IMDG:T75	LOX, LIN, LCO ₂ , LAr	19.6	2.16			11,861	Standard CO ₂ with pump flow process	
IMDG:T75	LNG	46	0.7	12,192 x 2,438 x 2,591	33,676	15,648	Standard LNG flow process	
IMDG:T75	LIN	7.4	0.69	2,991 x 2,438 x 2,635	10,160	4,480	Standard liquid nitrogen flow process	Offshore platforms
IMDG:T50	LCO ₂	18	2.2	6,700 x 2,438 x 2,591	29,956	12,600	Standard CO ₂ flow process	



ITEM	DESCRIPTION	ITEM	DESCRIPTION	ITEM	DESCRIPTION	ITEM	DESCRIPTION	ITEM	DESCRIPTION
T	Pressure filter	CZ-2	Gas connection	VP-1	Vacuum equipment	V-5	Top fill root valve	V-12	Relief system diverter valve
FA	Flame arrester	SV-1A	Inner vessel safety valve	TC-1	Vacuum probe	V-6	Manual vent valve	V-13	Discharge valve
PL-1	Pressure gauge	SV-1B	Inner vessel safety valve	TV-1	Isolation valve	V-7	Discharge valve	V-14	LP isolation valve
LL-1	Level indicator	SV-1	Relief valve	V-1	Fill and drain valve	V-8	Two-position three-way valve	V-15	Panel isolation valve
X-1	Emergency shut-off valve	SV-2	Relief valve	V-2	Gas phase valve	V-9	Trycock valve	V-16	Gauge equalizer valve
X-2	Emergency shut-off valve	SV-3	Relief valve	V-3	Top fill valve	V-10	Bleed valve		
CZ-1	Fill and drain connection	RF-1	Jacket vacuum relief	V-4	Pressure build valve	V-11	Fill-line bleed valve		

Note: This drawing is provided for general informational purposes only. Neither KCenergi LLC nor Furucit assume any liability for required, changes and/or revisions or errors.



kcenergi.com | Small-Capacity LNG Solutions

Official representative of FURUISE

KCenergi, LLC is the USA based application and sales partner of FuruiCIT (Furui Cryogenic Integrated Technologies). We serve global cryogenic markets while providing special emphasis to the Americas, Caribbean and Sub-Saharan Africa. FuruiCIT is a subsidiary of FURUISE Group, a publicly traded world-class manufacturing company with over 30+ years of experience in cryogenic, marine and infrastructure products and systems. FURUISE employs over 3,500 workers with wholly owned operations in the USA, Europe and Asia.

800.362.6085 (OFFICE) | 918.671.2008 (MOBILE) | gea@kcenergi.com