



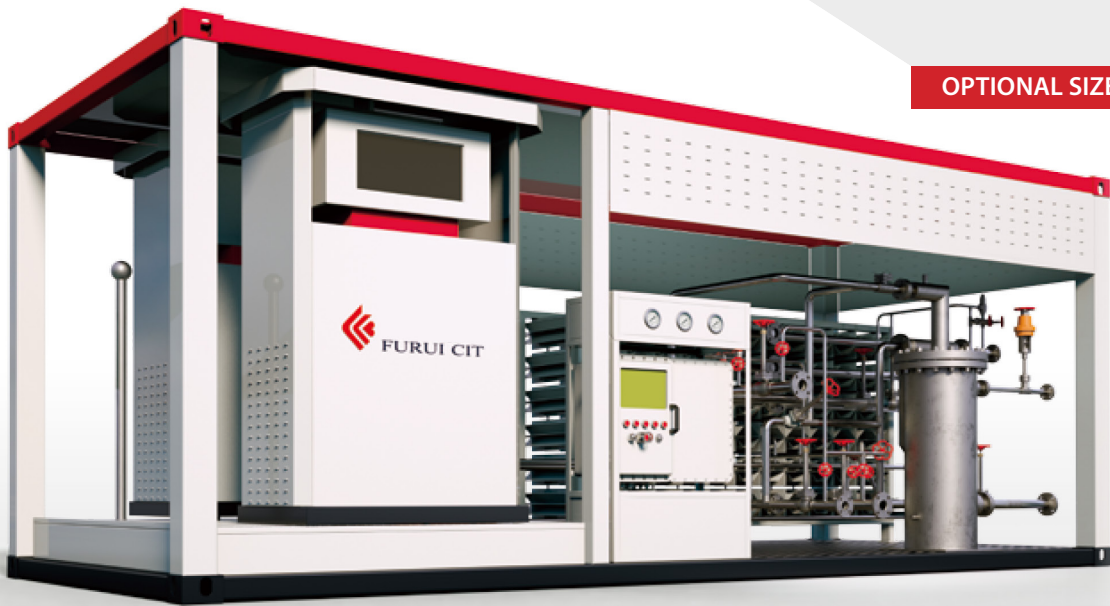
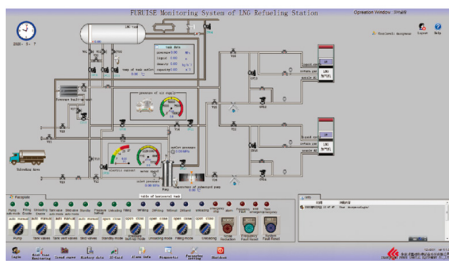
**Convenient LNG Refueling**

The refueling station is modular, self-contained and skid mounted. The units are designed to connect with virtually any type LNG storage vessel, including ISO containers. Skids can be equipped with either 1 or 2 LNG dispensers, and deliver either saturated or cold LNG, depending on demand requirement.

Our user friendly control system monitors, manages and displays key data related to LNG unloading, storage, pressure regulation and refueling.

**Benefits include:**

- Fully enclosed/minimal footprint
- Mobility allows for flexibility of applications
- Does not require connection to a grid
- Submerged cryogenic pump
- Low capital cost
- Minimal operating costs



**OPTIONAL SIZES AVAILABLE**



**kcenergi.com | Small-Capacity LNG Solutions**

Official representative of **FURUISE**

KCEnergi LLC is the strategic application and sales partner of FURUISE in the Americas and South Africa. FURUISE is a publicly traded world-class LNG equipment manufacturing company with over 30+ years of experience in the design and construction of LNG liquefaction plants and associated equipment. FURUISE employs 3,000 workers and has more than 2.3 million ft<sup>2</sup> (210,000m<sup>2</sup>) of fabrication space.

918.671.2008 | [gea@kcenergi.com](mailto:gea@kcenergi.com)

**DESIGN PROOF**

FILE NAME: KCe\_SellSheet\_2021  
 LAST MODIFIED: May 10, 2021 8:47 AM  
 VERSION NUMBER: 3  
 DESIGNER: Daniel Tideman

## DESIGN SPECIFICATIONS

Criteria	Rating
Design Standard	ASME
Working Pressure	1.6MPa
Design Pressure	2.5MPa
Design Temperature	-196°C
Ambient Temperature	-40~60°C

Criteria	Rating
Voltages	Three-phase AC380V 50HZ
	Single-phase AC220V 50HZ
	Direct current DC24V
Power	≤18KW
Skid dimensions	2991×2438×2591mm
Refueling speed	8 ~ 80KG/min @ ±1.0% metering tolerance
Optional functions	1. Saturation adjustment and pressurized storage systems; 2. LNG unloading and metering;

## CONFIGURATION LIST

Component	Size	Unit	Standard	Optional
<b>Cryogenic pump</b>				
Cryogenic pump	/	piece	Cryostar	ACD/VANZETTI/Huzhou Sanjing
Pump sump	DWBC-00A	piece	Furui	/
Cryogenic valve	/	set	Furui	BESTOBELL/HEROSE
Cryogenic mass flowmeter (optional config.)	DN50	piece	American Emerson	Switzerland E+H / KROHNE
Steel pipes and accessories	/	set	/	/
<b>Refueling/Metering</b>				
Refueling operation panel	Ex	set		
Cryogenic mass flowmeter	DN25	piece	American Emerson	Switzerland E+H / KROHNE
LNG refueling nozzle	DN25	piece	Furui	JC-CARTER/American ACD/MACRO
Refueling nozzle receptacle	DJK-25A	piece	Furui	/
Gas return nozzle	DHJ-10	piece	Furui	MACRO/JC-CARTER
Cryogenic valves	/	set	Furui	BESTOBELL/HEROSE
Refueling hose	DN25x4m	piece	Furui	/
Gas return hose	DN15x4m	piece	Furui	/
<b>Instrument gas system</b>				
Nitrogen cylinder	40L	set	/	/
<b>Electrical, automatic control system</b>				
Control panel	Explosion-proof	set	/	/
PLC hardware	/	set	Siemens	Siemens / Schneider
Frequency converter	18.5KW	set	Siemens	Siemens / Schneider
Temperature and pressure transmitter	4-20mA	set	Rosemount	Rosemount/E+H/Honeywell
Explosion-proof solenoids	DC24V	set	SMC	SMC/CKD/ASCO
Combustible gas and flame detection	/	set	/	/



## kcenergi.com | Small-Capacity LNG Solutions



KCenergi LLC is the strategic application and sales partner of FURUISE in the Americas and South Africa. FURUISE is a publicly traded world-class LNG equipment manufacturing company with over 30+ years of experience in the design and construction of LNG liquefaction plants and associated equipment. FURUISE employs 3,000 workers and has more than 2.3 million ft<sup>2</sup> (210,000m<sup>2</sup>) of fabrication space.

918.671.2008 | [gea@kcenergi.com](mailto:gea@kcenergi.com)

### DESIGN PROOF

FILE NAME: KCe\_SellSheet\_2021  
 LAST MODIFIED: May 10, 2021 8:47 AM  
 VERSION NUMBER: 3  
 DESIGNER: Daniel Tideman